

# Off-Grid, Dual Energy, Site Light

Reliable, off-grid  
lighting, creating  
safer working  
environments

Energised by nature...



**Kight**  
Off Grid

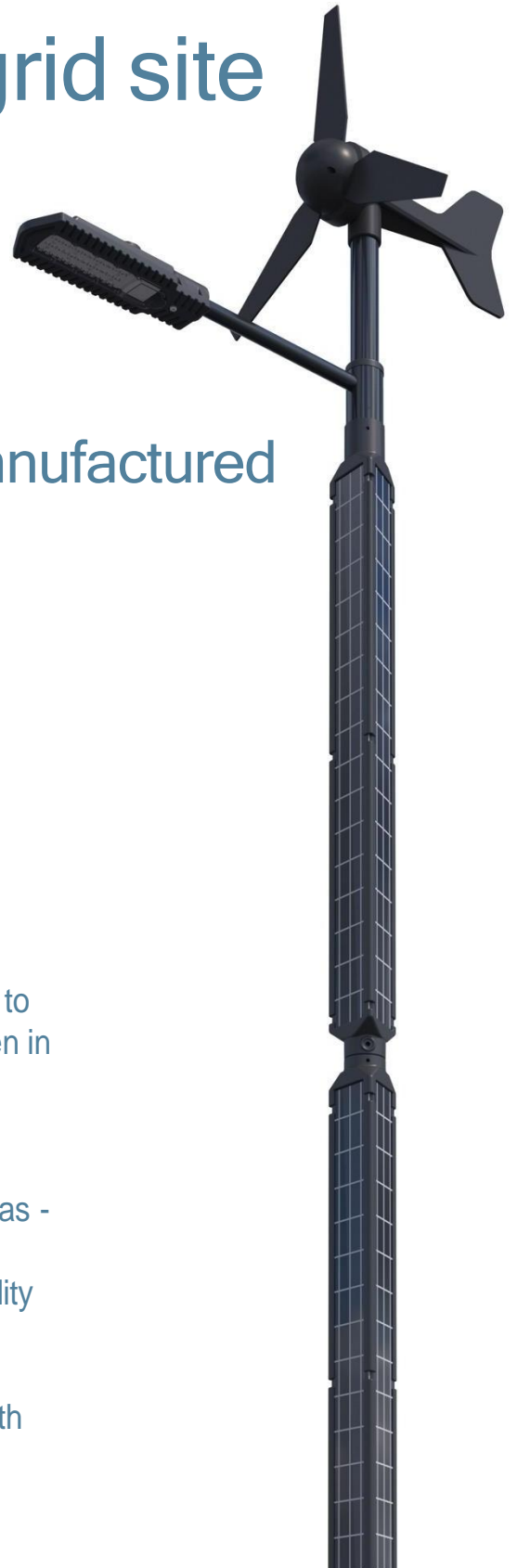


# Completely off-grid site lighting solution

Designed, tested and manufactured in the UK

## Product Video Link

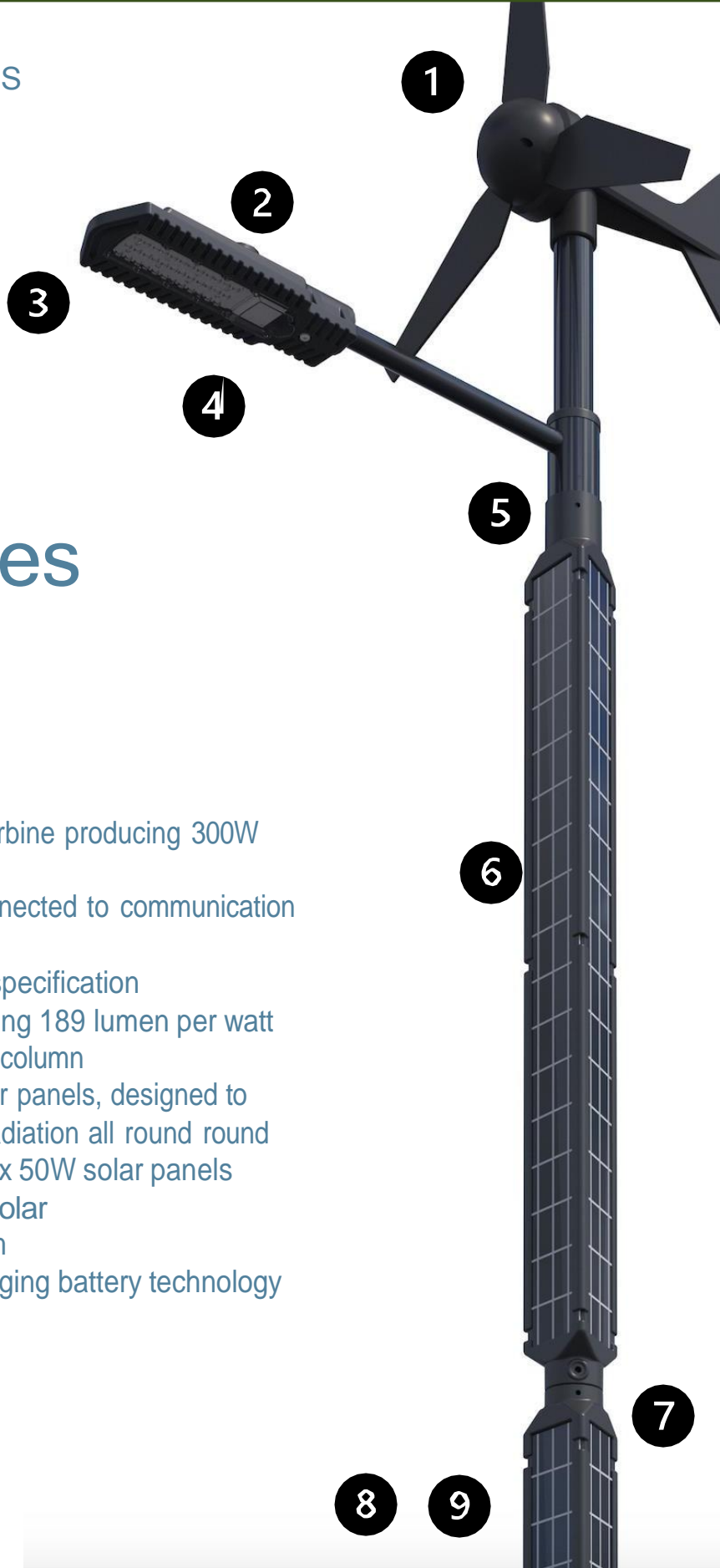
- Dual energy input harnessing both wind and solar energy
- 100% off-grid with no back up required
- Designed to produce enough green energy to provide 16 hours of light and back up in even in extreme weather conditions
- Advanced sustainable technology developed especially for our products
- No loss of efficiency in temperatures as low as -13°F and high at 140 °F
- Centralised remote monitoring and adjustability of lighting levels and on/off timings
- Extended product lifespan of 27+ years
- Powered from 100% green, clean energy with no running costs and no emissions



# Key Features

## Features

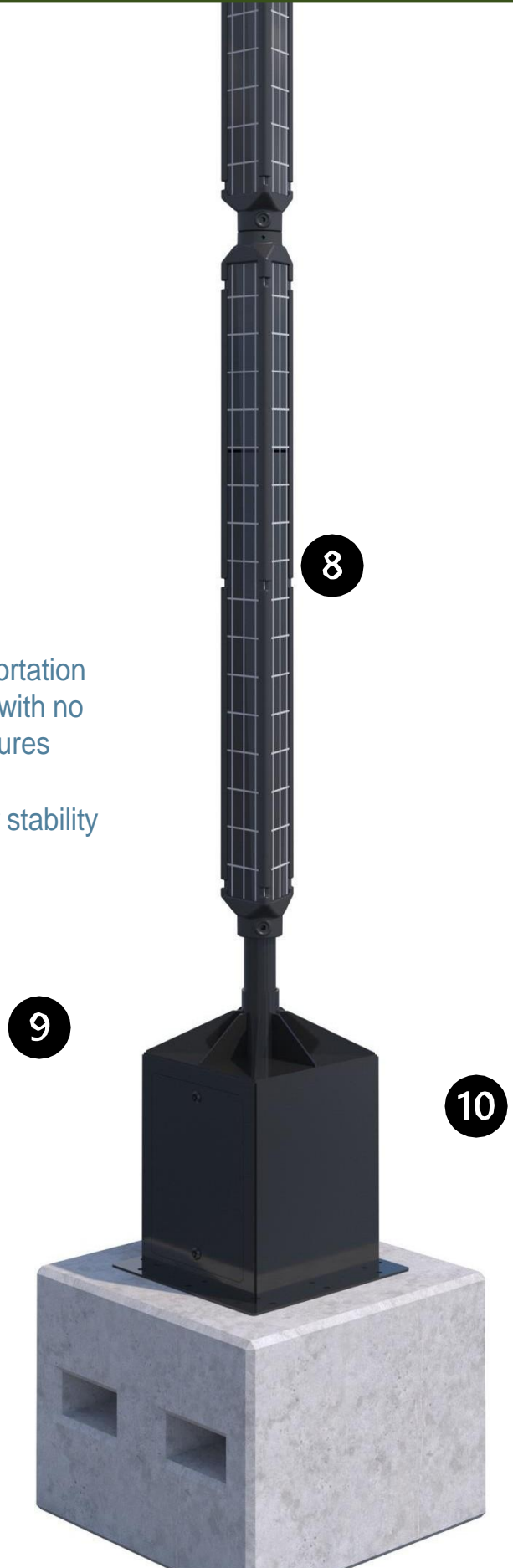
1. UK made durable wind turbine producing 300W peak power
2. Communication node connected to communication gateway
3. Die cast lantern to IK10 specification
4. 12W LED lantern producing 189 lumen per watt
5. Galvanised, powercoated column
6. Vertical, self-cleaning solar panels, designed to capture maximum solar radiation all round round
7. Dual solar holders with 6 x 50W solar panels producing 300W peak solar
8. Integration control system
9. Next generation fast-charging battery technology with 27+ year lifespan



# Key Features

## Features

- 8. Detachable column for ease of transportation
- 9. Next generation fast charging battery with no loss of efficiency in sub-zero temperatures
- 10. Dual integration controller
- 11. Concrete base block with fork slots for stability when moving



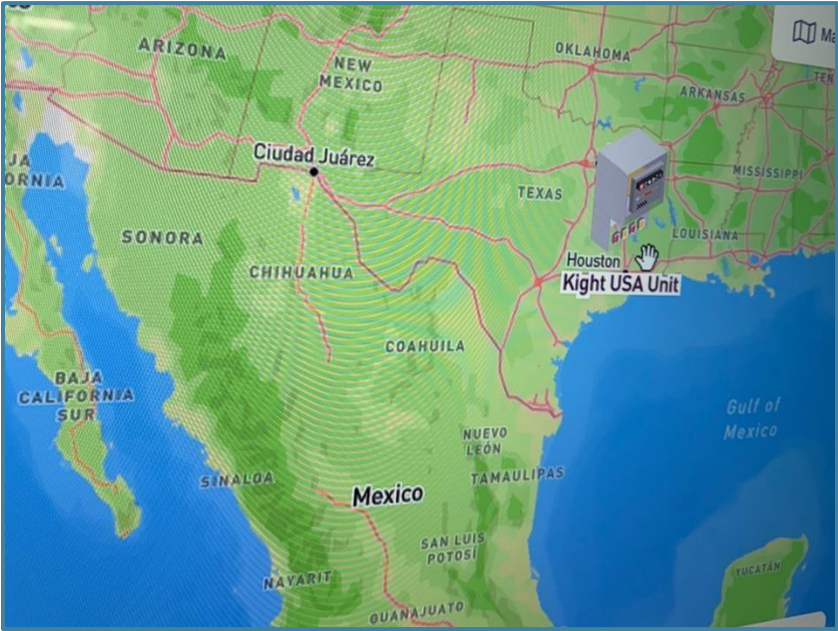
Kight Off-Grid | Model KV6DST-US

Dual solar &  
wind input  
giving year-  
round  
reliability

Energised by nature...



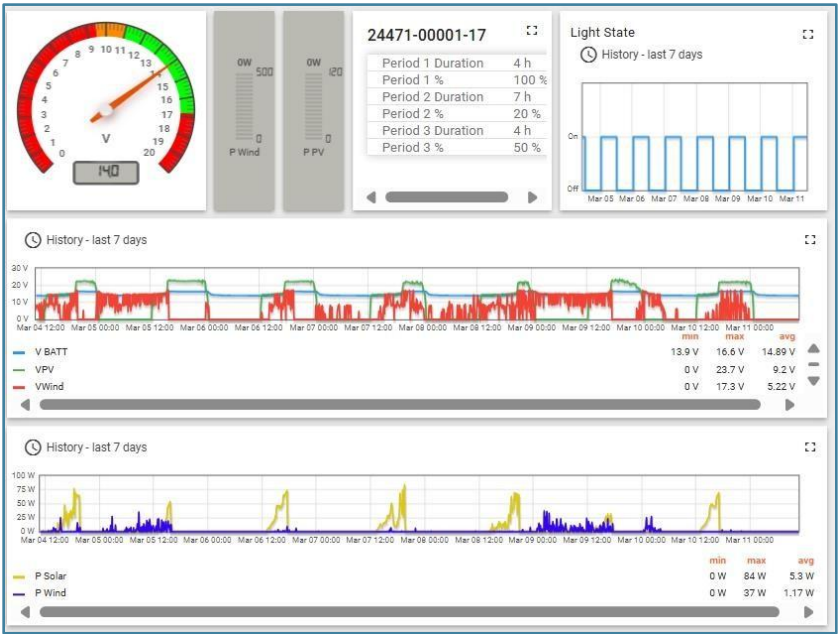
**Kight**  
Off Grid



GPS Asset Monitoring

Kight’s GPS connectivity allows real time monitoring of lighting assets anywhere in the country.

Controllability and lighting level adjustment.



Client Dashboard

Our client interface dashboard gives real time data of battery charge state, solar and wind inputs.

## Product Information & Data

### Column

- Recommended lantern height 15' or 18' depending on application
- Recommended total height with turbine 16.4' – 23'
- Column upper dimension 3" shaft.
- Galvanised, gloss black powercoated

### Lantern

- Die cast aluminium LED lantern, IK10 specification
- High performance LEDs, generating 186 - 200 lumen per watt
- Total lantern output 4400 - 5000 lumen output
- Colour rendering 4000 – 6000 kelvin

### Coverage

- Photometry available on Lighting Reality
- Comparable to traditional on-grid lighting solutions

### Solar

- 4.8W relative efficiency at low light 97.3%
- 6 x 50W solar panels with 300W peak solar
- Vertical self-cleaning solar panels
- Secure solar holder designed to capture maximum solar radiation all year round
- Optimising size of solar array without windage issues

### Battery

- Battery storage – 80ah
- Next generation battery technology
- Kight non-graphite anode technology
- Chemistry designed specifically for Kight off-grid products

### Energy

- 300W peak solar
- 300W peak wind
- 80Ah/12V/1104w/h

### Integration

- Dual solar/wind input simultaneously
- Designed to optimise efficiencies between wind and solar inputs and output requirement of the product

### Turbine –KRF model B only

- Wind turbine – KLE-300
- Related power 300W
- Peak power coefficient 0.34c
- Valid power curve air density 1.23kg/m3
- Optional (not always required in sunnier climates)

### Connectivity

- Remote monitoring
- Full asset management
- Custom client access to dashboard for monitoring assets
- Stepped programmable lighting levels remotely adjustable

